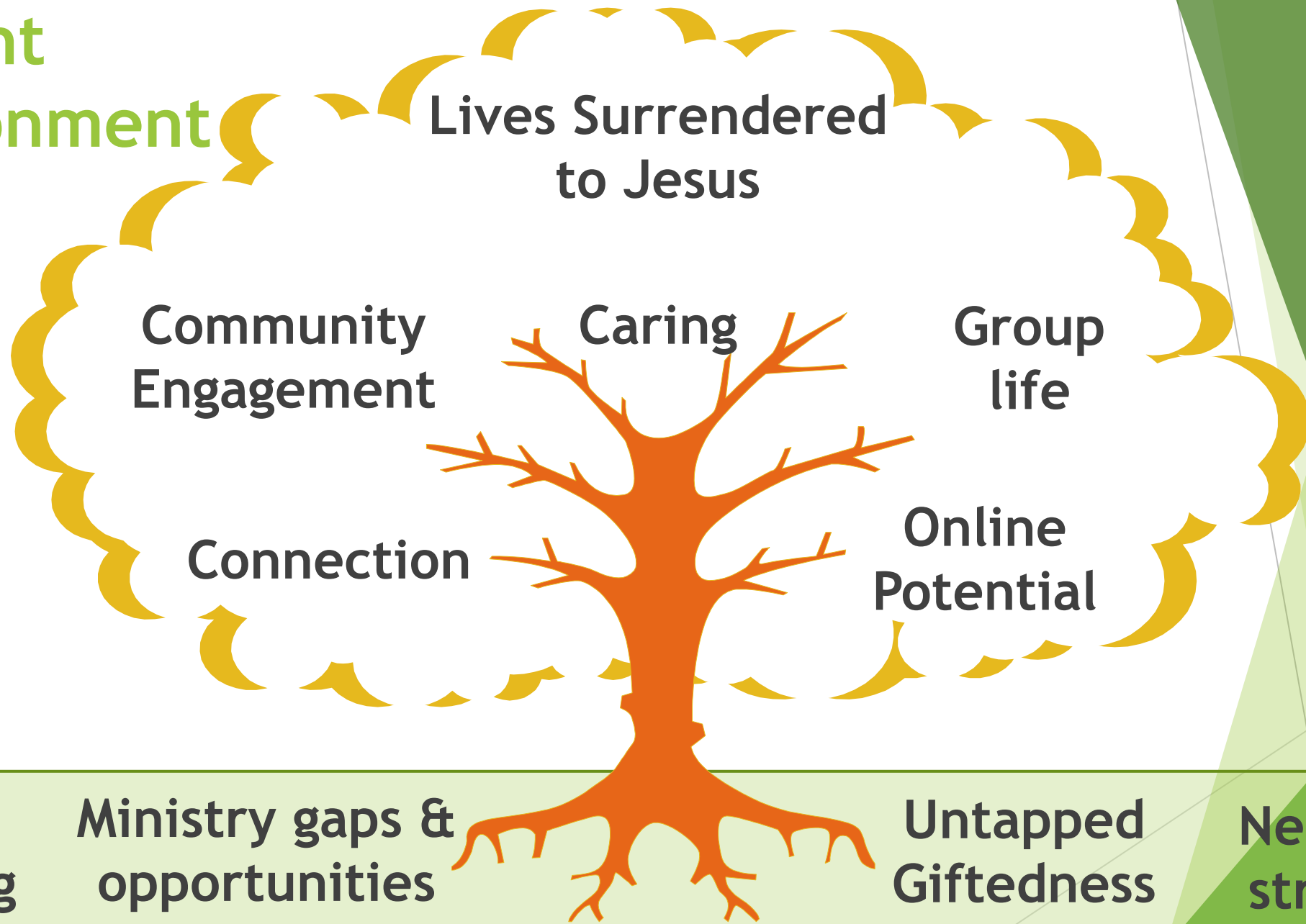


Ministry Implementation Teams (MIT)

Current Environment



WBC is Growing

Ministry gaps & opportunities

Untapped Giftedness

Need broader structure for growth

God's vision for WBC

What is the setting for this...

- Westview is growing!
- We have untapped giftedness
- Many areas for deepening, expanding, improvement in our ministry
- We need a broader structure to support the implementation of ministry depth, growth and improvements
- God is leading us to what He wants us to be and do as a church - we desire to be part of His plans being accomplished

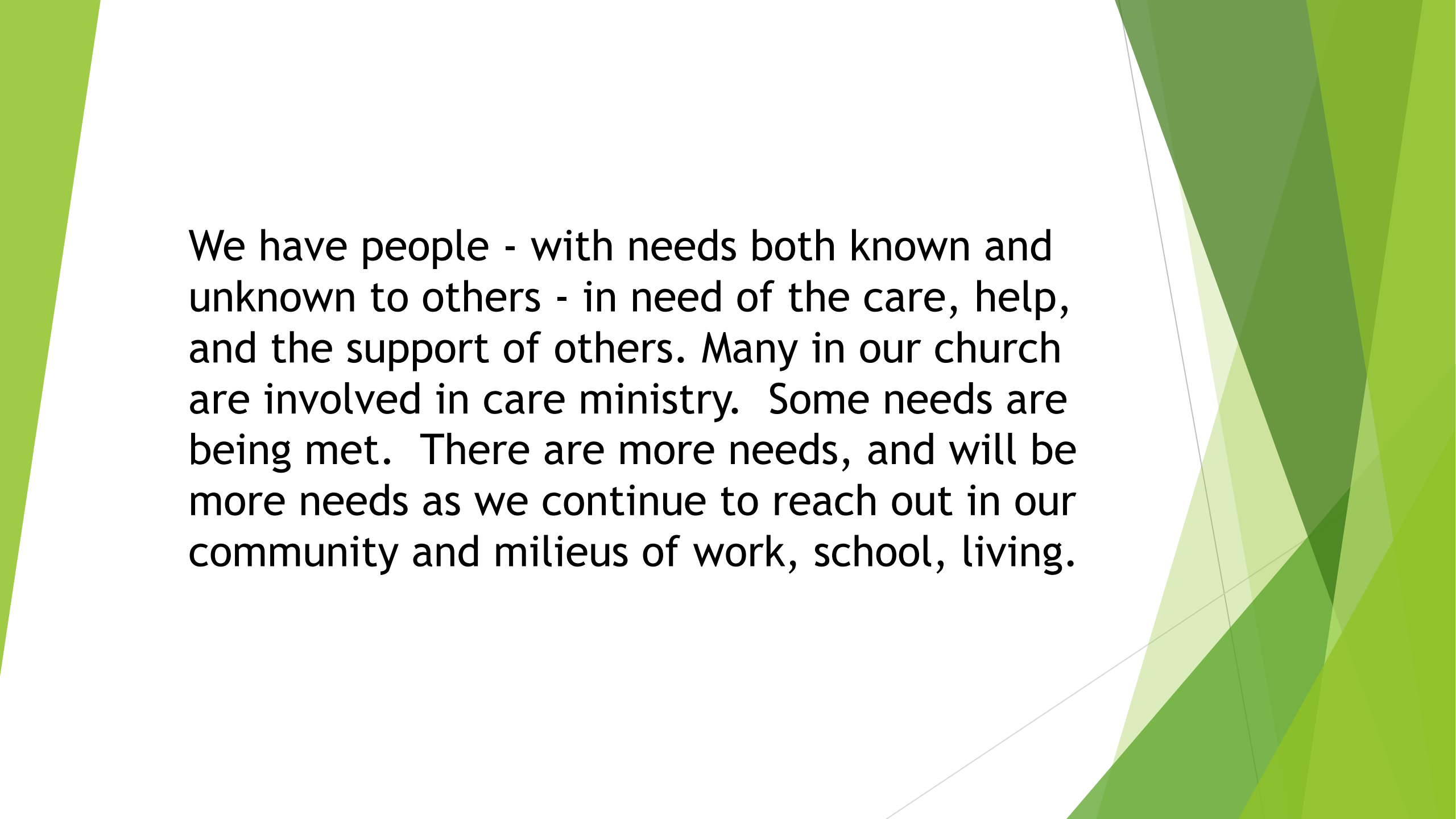
Connecting happens effectively through small groups - many at Westview are being blessed by a small group involvement. The number of small groups has been growing in the past few months. We need to provide even more groups. We have people desiring to be in one, and those on the cusp of small groups (i.e. - 80 participants at 2018 Alpha).

We have resources to host, and be alongside the community in a deeper way. We have many ministries that engage with the community (Basketball, Fitness, Youth, Ball Hockey, Alpha, our Children's Ministries to name just some). How and what are the additional best ways? What are the needs to be met and the ways to go about connecting? We need to engage more with those living in the area of our church, in our West island Community.

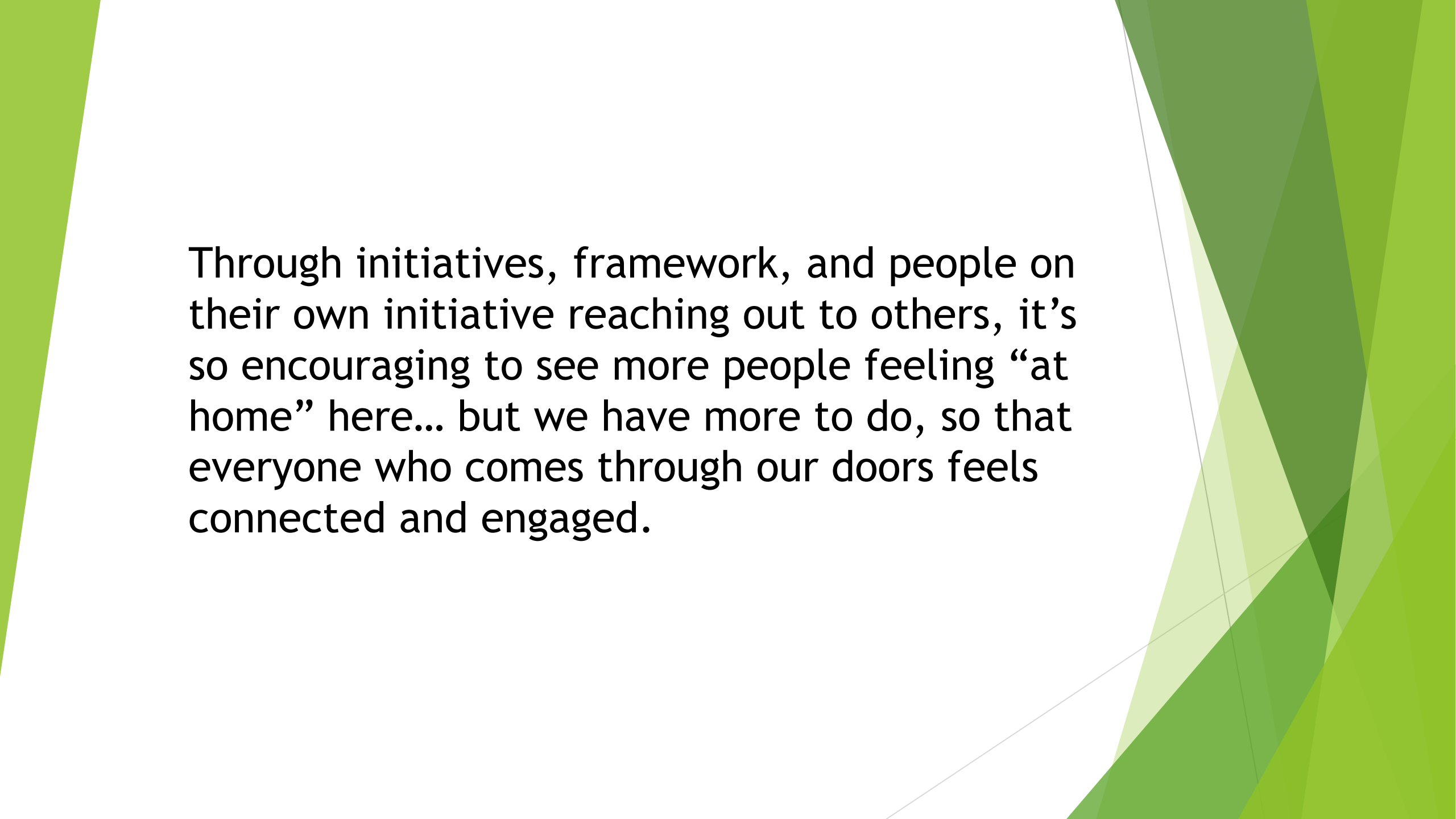
We are seeing people decide to follow Jesus through our relationships and personal witness, in programs and through Sunday mornings. We want to see more people decide to follow Jesus. We are called to share the Good News.

We have website, and social media presence with untapped potential - how could we use these to their fullest?

We have website, and social media presence with untapped potential - how could we use these to their fullest?



We have people - with needs both known and unknown to others - in need of the care, help, and the support of others. Many in our church are involved in care ministry. Some needs are being met. There are more needs, and will be more needs as we continue to reach out in our community and milieus of work, school, living.



Through initiatives, framework, and people on their own initiative reaching out to others, it's so encouraging to see more people feeling "at home" here... but we have more to do, so that everyone who comes through our doors feels connected and engaged.

The Approach

The background features a series of overlapping, semi-transparent green triangles and polygons of various shades, ranging from light lime green to dark forest green. These shapes are primarily located on the right side of the slide, creating a modern, layered geometric effect. The text 'The Approach' is positioned on the left side of the slide in a clean, sans-serif font.

What is a Ministry Implementation Team?

People working together to
implement:

- New ministry initiatives
- Deepen or grow existing ones

Focused

Project approach

Engaging individual's gifts

What is a Ministry Implementation Team?

- Ministry Implementation Teams are structured teams of people working together to implement new ministry initiatives, and deepen or grow existing ones.
- Focused (not trying to do everything at once)
- Project approach (i.e. - starting point and ending point)
- Built from the Westview pool of giftedness

What would it look like as it works...

Re-energized
involvement



Direction &
movement forward



Spiritual growth and
connection



Greater impact on our
church & community



MITs



What would it look like as it works...

- the re-energized involvement of a wide range of gifted people at Westview
- direction and movement forward to specific ministry areas, core focuses, projects or priority needs
- a more effective sharing of ministry tasks
- improved sense of inter-connectedness and communication within the church
- the development of deeper spiritual gifting across the range of spiritual gifts
- a renewed spiritual dynamic for the Westview community
- potential for greater impact in our communities

MIT Steps

Who

Identify focus areas

- Senior Leadership Team

Build area teams

- Jeff, Jonathan, Nita with MIT Area Leaders

Define project plans
and initiatives

- Ministry Implementation Team Leaders

Research

- MIT

Develop
recommendations

- MIT

Review process

- Jeff, Jonathan, Nita with MIT Area Leaders

Implement
recommendations

- MIT

MIT Steps

Example

Identify focus areas

- Small Groups identified as an improvement area

Build area teams

- Identify leader and team of X people

Define project plans and initiatives

- Research X months, Implement X months

Research

- Understanding of groups at WBC, research other churches etc.

Develop recommendations

- X improvements (i.e.. Training, Preaching, Promotion, New locations)

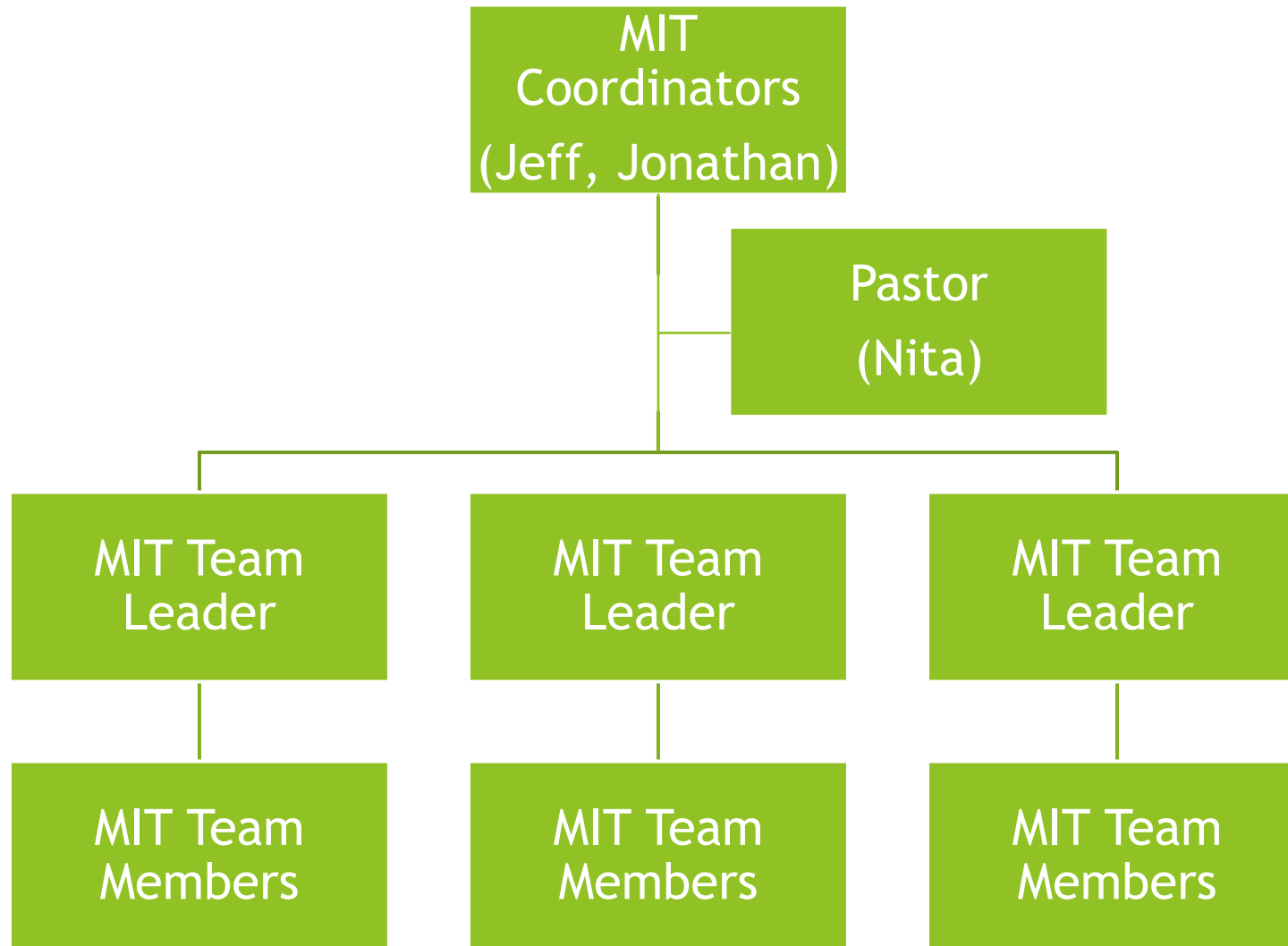
Review process

- Regular reviews to support & align with overall vision

Implement recommendations

- Implement improvements over X months

Structure



Commitment

MIT Team Member

| | |
|-----------------|--------------------|
| Team commitment | 2 years |
| Team meetings | Monthly/Bi Monthly |

MIT Team Leader

| | |
|------------------------------|--------------------|
| Team commitment | 2 years |
| Team meetings | Monthly/Bi Monthly |
| MIT Leaders group discussion | 3x/year |
| Meeting with SLT | 2x/year |
| Pastor/Director meetings | As scheduled |

MIT Focus Areas

Evangelism

Care

Connectedness

Small
Groups

Community
Engagement

Social
Justice

Web /
Social
Media

Some of the Ministry Implementation focuses are areas that the Leadership Advisory Teams researched, some are other areas added in...

but they all reflect either a priority need, or a core focus we have as a church.

These are the ones we've been led to include right now.

There may be other areas you wonder why they aren't in the mix... some already have a team or committee around them in some capacity, or they aren't in the mix for this season of the MIT approach.

Evangelism

That regularly, people are being encouraged and told how they can enter into a relationship with God, through Jesus, via services, events, initiatives, ministry programs, and through Westview individuals in the locales they inhabit.

Care

That everyone with a need at Westview would have people alongside them; that teams and rosters of people would be coming alongside the needs of those in their church family.

Connectedness

That every person calling Westview their church home would feel both known, and that they know people; that they are involved in attending, participating actively and serving.

Small Groups

The majority of Westview attendees will be connected to and experiencing deeper community within a regular small group Bible Study, affinity, or serving team

Community Engagement

That Westview would be more closely involved and alongside the surrounding neighbourhood of the church and the broader west island community through programs that invite people in, and through initiatives both structured and informal that take place outside the church walls and property, happen with the community.

Social Justice

That Westview would be speaking into and responding in practical means to make a difference in the social justice needs and issues in our community and world.

Web / Social Media

That Westview would have a visible, effective online, and social media presence that engages, invites and ministers.

How To Get Involved?

- ▶ Volunteer yourself
- ▶ Nominate someone

- ▶ To volunteer or nominate someone, contact...

Nita Kotiuga:
nita@westviewlife.org

or Jeff Simunic:
jeff@westviewlife.org

Let us know which Focus Area
you are interested in.

So how can you get involved...

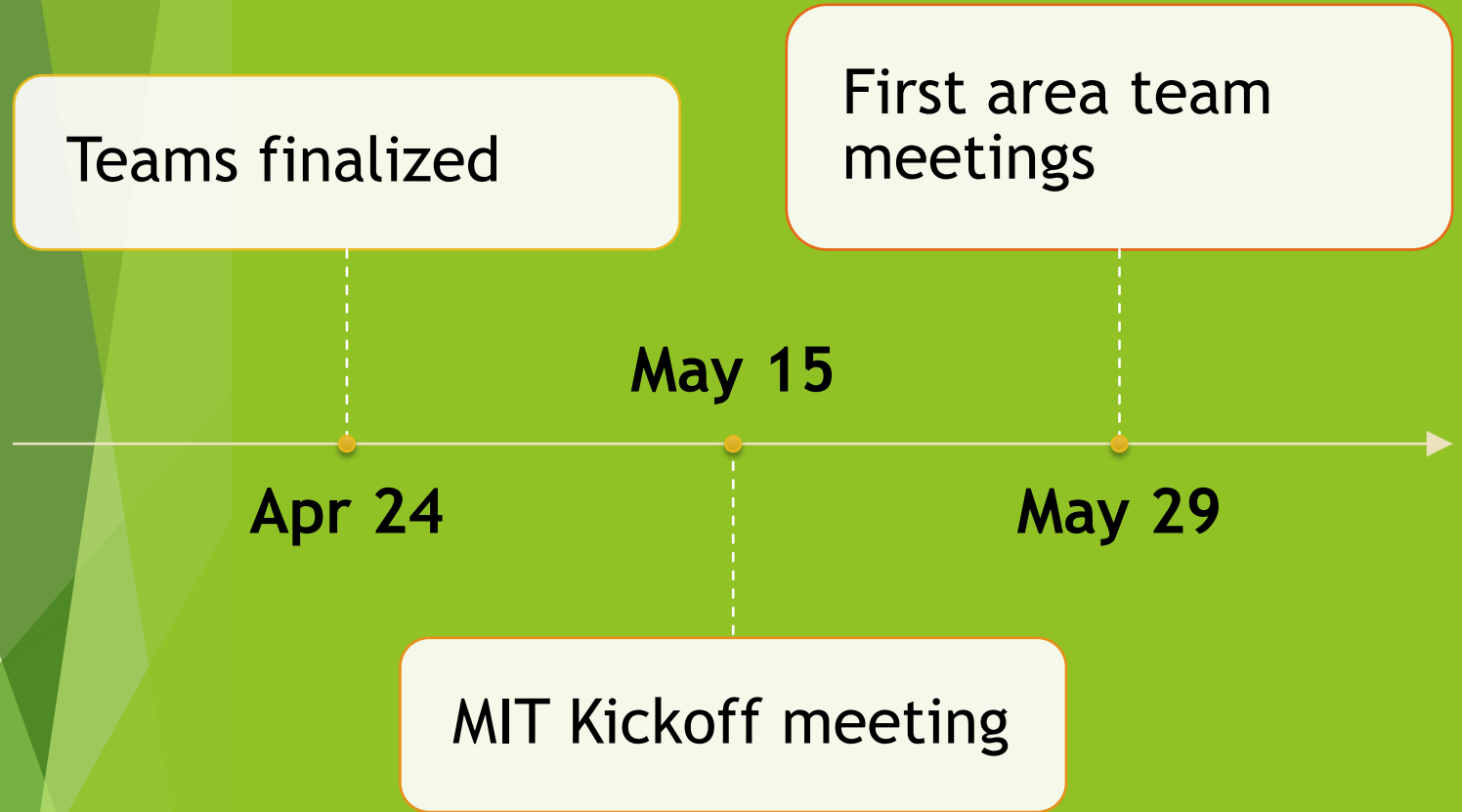
As you've read through the focus areas and are praying, if one of them caused your spirit to stir, your heart to quicken or your mind to start churn, contact Jeff or Nita to volunteer yourself.

If someone you know comes to mind for one of these areas, encourage them to volunteer, or you can ask Nita or Jeff to approach them.

If you need to know more before volunteering... don't hesitate to contact...

Jonathan Stymiest: jonathan@stymiest.ca
or Jeff Simunic: jeff@westviewlife.org

Next Steps



Thank you for prayerfully
considering if, and where,
you might get involved.